



TEST REPORT

SAMPLE INFORMATION:

Applicant : Zhongshan Shaxi City Jinsan Mannequin Factory
Address : No.75-5, Kangle North Road, Xiangjiao Village, Shaxi Town, Zhongshan City
Manufacturer : Zhongshan Shaxi City Jinsan Mannequin Factory
Address : No.75-5, Kangle North Road, Xiangjiao Village, Shaxi Town, Zhongshan City
Product : Love doll
Brand Name : WMDOLL
Model(s) : WM -11, WM-168, WM-168T
Received date : 2016-07-18
Testing period : 2016-07-18 to 2016-07-26

TEST INFORMATION:

Sample State : Solid
Sample Package : Intact
Ambient Condition During Testing : 20 °C,50%RH.

Ref. Documents for the Test: Phthalate(DEHP、DBP、BBP、DINP、DIDP、DNOP)

REMARKS: The test report is valid for above tested sample only and shall not be reproduced in part without written approval of the laboratory.

Signed for Shenzhen ETR

Jack Wang
Manager



Test Result:

Phthalates Content : Test Method : With reference to EN14372:2004 , analysis was performed by GC-MS.

Test Item(Phthalates)	Result (mg/kg)			Detection Limit (mg/kg)	Limit (mg/kg)
	(1)	(2)	(3)		
Dibuty phthalate (DBP)	N.D.	N.D.	N.D.	50ppm	1000ppm
Benzylbuty phthalate (BBP)	N.D.	N.D.	N.D.	50ppm	
Di-2-ethylhexyl phthalate(DEHP)	N.D.	N.D.	N.D.	50ppm	
Di-n-octyl phthalate (DNOP)	N.D.	N.D.	N.D.	50ppm	1000ppm
Diisodecyl phthalate(DINP)	N.D.	N.D.	N.D.	50ppm	
Diisodecyl phthalate(DIDP)	N.D.	N.D.	N.D.	50ppm	

Test Item(Phthalates)	Result (mg/kg)			Detection Limit (mg/kg)	Limit (mg/kg)
	(4)	(5)	/		
Dibuty phthalate (DBP)	N.D.	N.D.	/	50ppm	1000ppm
Benzylbuty phthalate (BBP)	N.D.	N.D.	/	50ppm	
Di-2-ethylhexyl phthalate(DEHP)	N.D.	N.D.	/	50ppm	
Di-n-octyl phthalate (DNOP)	N.D.	N.D.	/	50ppm	1000ppm
Diisodecyl phthalate(DINP)	N.D.	N.D.	/	50ppm	
Diisodecyl phthalate(DIDP)	N.D.	N.D.	/	50ppm	

Remarks : 1. N.D. = Not detected
2. Mg/kg = ppm

Test Part Description :

- (1) Silicone body
- (2) Hairpiece
- (3) Eyes
- (4) Lips
- (5) Fake nail tablets



Note:

DBP,BBP,DEHP Reference information : Entry 51 of Regulation (EC) No 552/2009 amending Annex XVII Of REACH Regulation (EC) No 1907/2006(Previously restricted under Directive 2005/84/EC) :

i) Shall not be used as substances or in mixtures, in concentrations greater than 0.1% by weight of the plasticized material, in toys and childcare articles.

ii) Toys and childcare articles containing these phthalates in a concentration greater than 0.1% by weight of the plasticised material shall not be placed on the market.

Please refer to Regulation (EC) No 552/2009 to get more detail information.

DINP,DNOP,DIDP Reference information : Entry 52 of Regulation (EC) No 552/2009 amending Annex XVII REACH Regulation (EC) No 1907/2006(Previously restricted under Directive 2005/84/EC) :

iii) Shall not be used as substances or in mixtures, in concentrations greater than 0.1% by weight of the plasticized material, in toys and childcare articles which can be placed in the mouth by children.

iv) Such toys and childcare articles containing these phthalates in a concentration greater than 0.1% by weight of the plasticized material shall not be placed on the market.

Please refer to Regulation (EC) No 552/2009 to get more detail information.



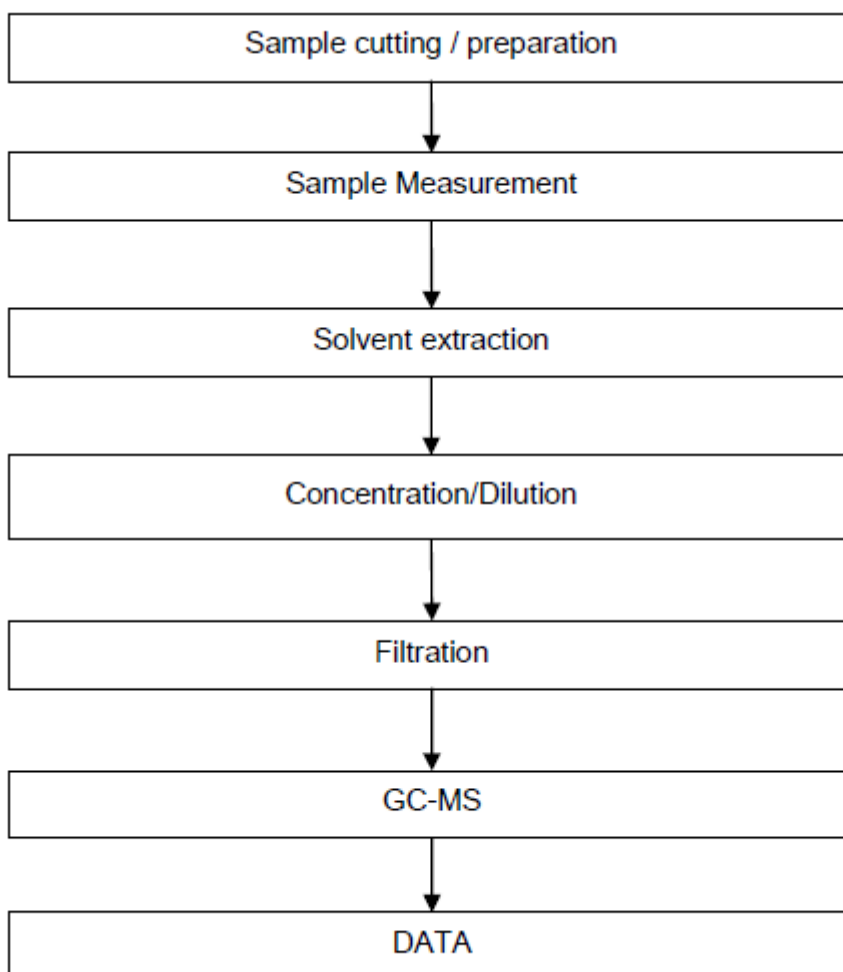
Attachments:

1. Test/Witness Engineer:

Jim chen

2. Flow chart:

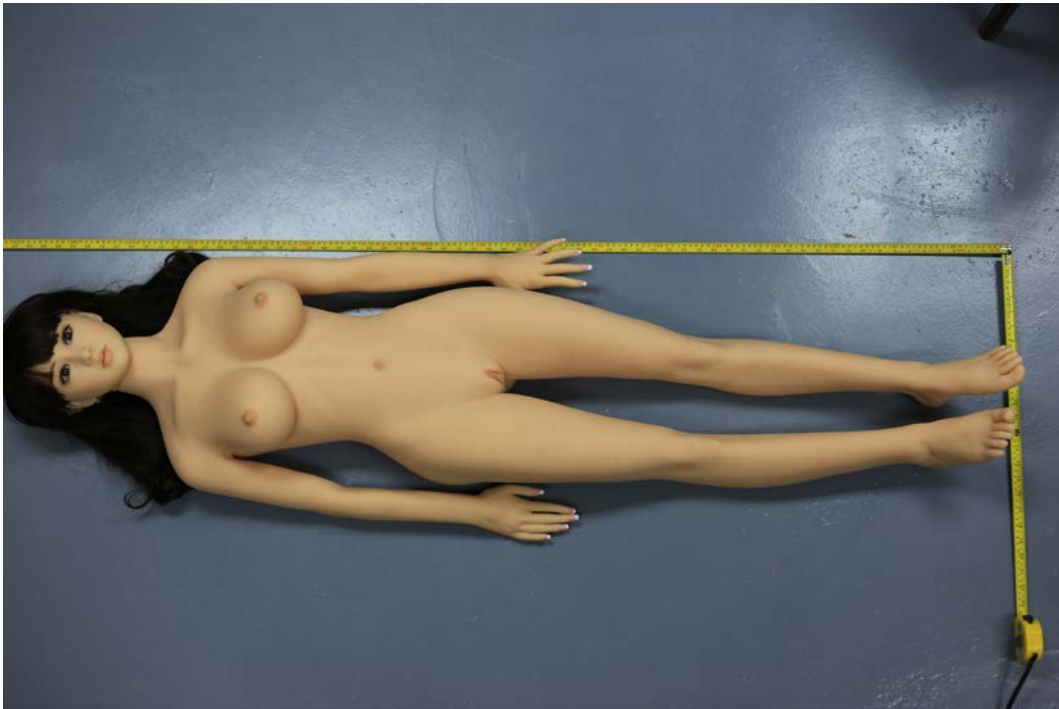
Phthalates testing flow chart





Photograph of Sample

Photo Appearance of Sample



END OF REPORT